

ECR/DCR		REV.	REVISIONS	DATE	APPD
-	-	-	DESCRIPTION	-	-
			INITIAL RELEASE	-	-

PACKAGING INSTRUCTIONS

SET TO CONSIST OF:

(1) LATCH ARM / BRACKET ASSEMBLY

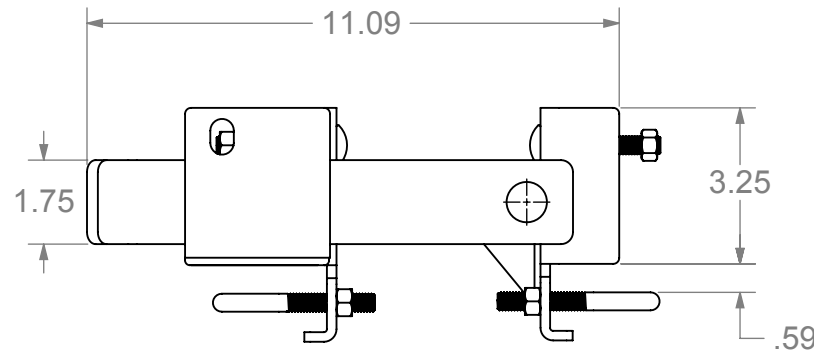
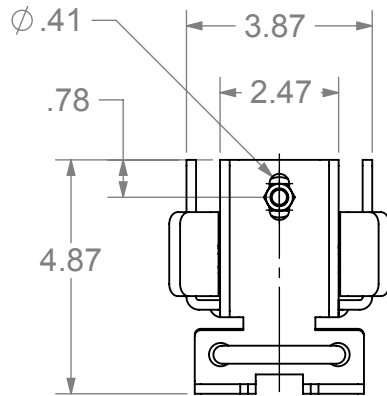
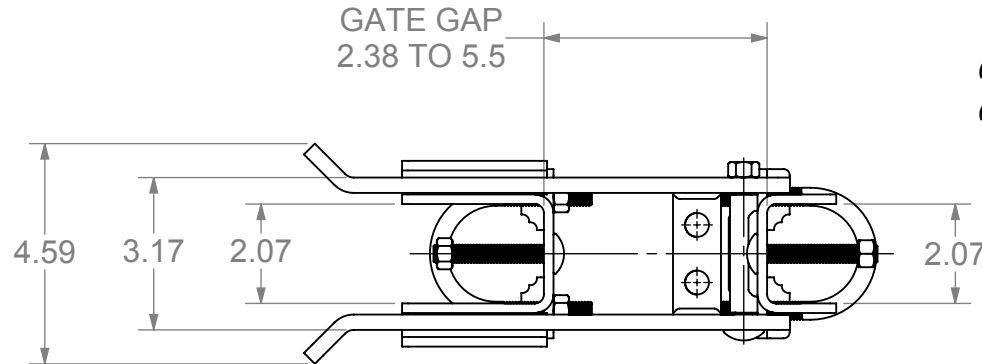
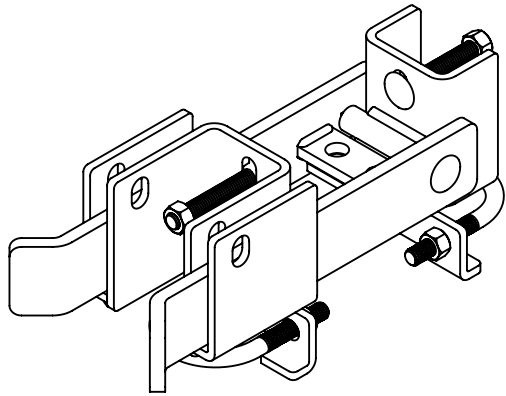
ASSEMBLY CONSISTS OF:

- (1) LATCH ARM ASSEMBLY
- (1) LATCH ARM BRACKET ASSEMBLY
- (1) LATCH ARM BOLT
- (1) 3/8-UNC-2B HEX NUT

(1) LATCH BRACKET ASSEMBLY

(1) MOUNTING HARDWARE KIT - POLYBAGGED CONTAINING:

- (2) 3/8-16 x 3" U-BOLTS
- (2) 3/8-16 x 2.50" CARRIAGE BOLTS
- (6) 3/8-16 UNC-2B HEX NUTS



NOTES:

1. PART TO HAVE A NON-ABRASIVE FINISH.
2. PART TO HAVE MIN. DRAFT ANGLE AS TOOLING REQUIRES.
3. ANY AND ALL CHANGES TO MATERIAL OR FINISH MUST BE APPROVED BY NWI.
4. ALL DIAMETERS TO BE CONCENTRIC WITHIN .005 UNLESS OTHERWISE SPECIFIED.
5. ALL CORNERS TO BE .015 MAX R OR CHAMFER OR OTHERWISE NOTED.
6. ALL DIMENSIONS ARE FINISHED PART DIMENSIONS.
7. POWDERCOAT FINISH TO BE INTERPON 600 OR NWI APPROVED EQUIVALENT.
8. PART VOLUME: CU. IN.
9. NO FLASH ALLOWED.
10. REMOVE ALL BURRS, BREAK CORNERS, AND SHARP EDGES.

DIMENSIONS ARE IN INCHES
 TOLERANCES:
 FRACTIONAL: ±1/16"
 ANGULAR: MACH ±1° BEND ±1°
 TWO PLACE DECIMAL ±0.01
 THREE PLACE DECIMAL ±0.005

**COMMERCIAL CHAIN LINK
 DOUBLE ARM LATCH SET**

IDGL

PART No.	FINISH	COLOR
IDGL	HOT DIPPED GALV.	MILL

SIZE	DWG. NO.	REV.
A		-
SCALE: 1:1	WEIGHT:	SHEET 1 OF 1